

SERVICE BULLETIN / TECHNICAL TIPS

Title: SBW0813 - Wolf – Proper Shutdown Procedures

Timeline: As needed

Subject: Wolf – Protecting Your System with Proper Shutdown Procedures

Note:

Improperly shutting down the system can result in errors in the Wolf, Windows® and/or cause the Line Controllers to fail.

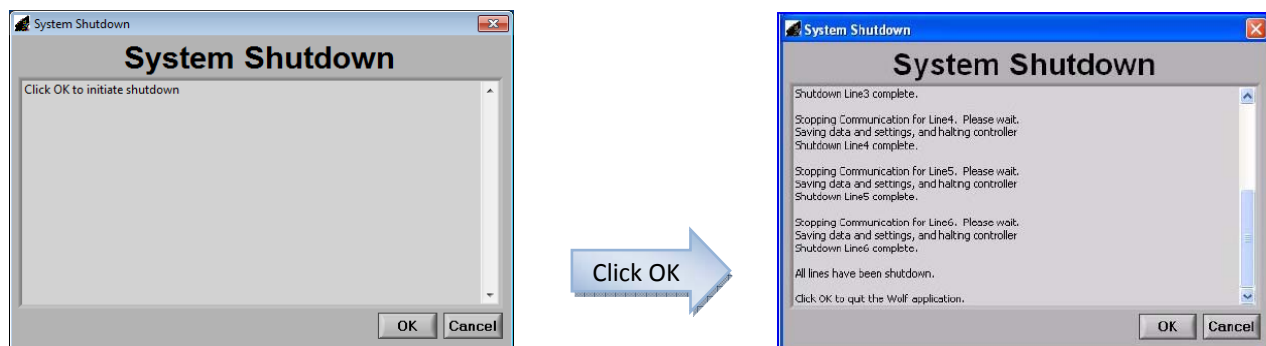
Warnings:

- Shut down the system prior to any welding, line maintenance, or scheduled power outages.
- Do not disconnect any cables/wires/connections inside the cabinet.

Shutdown Procedure:

Step 1 - Make sure all lines are stopped and not operational prior to proceeding.

Step 2 - Through the Wolf – go to Application > System Shutdown.



Step 3 - When this message appears: “Click OK to quit the Wolf application” – Click OK.

Step 4 - Wait for the message: “Exit Windows? Would you like to exit Windows and shutdown your computer?” – Click YES.

Step 5 - After Windows® shuts down and the monitor goes blank, proceed to shutdown the Backup PC (if applicable.)

Step 5a – Select the Backup PC on the KVM Switch. Go to Start > Shut Down to power off the PC.

Step 6 - Inside the cabinet, turn off the red illuminated power switches on the power strip and UPS.

Startup Procedure:

Step 1 – Verify Line Controller power switches are in ON position.

Step 2 - Turn on power to UPS and power strip.

Step 3 - Turn on Wolf PCs by pressing the power buttons.

Step 4 - Start the Wolf application by double-clicking the desktop icon.

Step 5 - Validate that all line controllers have started and are communicating (Tools > Communication Status).